



STAINLESS TECHNOLOGIES

Parts Specifications Catalog

Ferrules



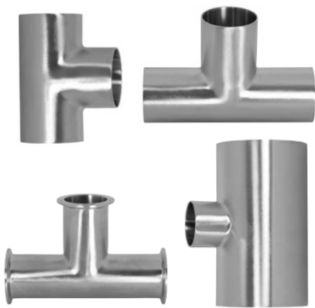
Elbows



Clamps & Caps



Tees



Reducers



Crosses & Bends



**Hangers with
PVC Insert**



Butterfly Valves



Ball Valves



Check Valves



Parts and More

We are more than a distributor of sanitary fittings and valves. Our family of companies has been providing process design, stainless steel fabrication and system installation since 1986. Like many of you, we manufacture and install turnkey process systems. We understand this business, and can provide you with goods and services that will contribute to your success.

For example: We are distributors for several valve and pump companies. Chances are very good that we can provide these components with your fittings and tubing. Moreover, we can build some parts, such as headers, to your specifications. Essentially, we could provide everything you need for a project.

About Our Parts

Our sanitary fittings and valves are imported in full container shipments from high quality sources. Each piece is 3A certified and marked with a heat number. Our prices are very competitive. We also supply tubing in boxed quantities.

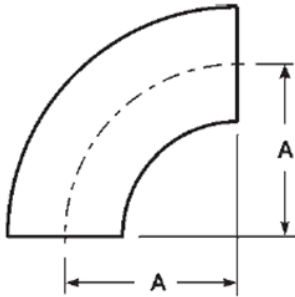
About Our Service

We routinely ship product with 24 hours of receipt of an order. When needed, we can use your UPS or FED EX account number and enclose your Bill of Lading with the shipment so your customer will think the product comes directly from you. Material Test Reports are provided upon request.

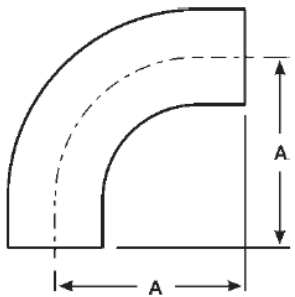
Item Number Cross-Reference

The table below is intended to help you identify our parts.

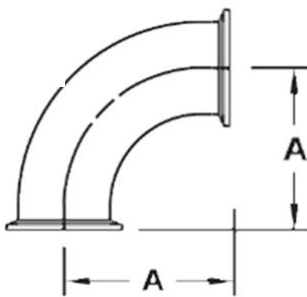
Description	Stainless Technologies	VNE	Alfa	Andron
90° ELBOW SHORT TANGENT	90E-SB	2WCL	2WCL	A2SX
90° ELBOW	90E-MB	E2S	L2S	A2S
90° CLAMP ELBOW	90E-MF	EG2C	B2CMP	AC2SX
45° ELBOW SHORT TANGENT	45E-SB	E2WK	2WK	A2KSX
45° ELBOW	45E-MB	E2KS	B2KS	A2KS
SHORT FERRULE	FRL-SB	EG2CS	14WMPS	AC14X
MEDIUM FERRULE	FRL-MB	EG14AM7	L14AM	AC14A
LONG FERRULE	FRL-LB		BS14AM	AC14WL
LONG LONG FERRULE	FRL-LLB	EG14WL	14WLMP	
TANK WELDING FERRULE	HFL-LB	EG2CS	14MPW	AC14H
CONCENTRIC REDUCER	CRD-MB	E31WW	L31	A31W
CLAMP CONCENTRIC REDUCER	CRD-MF	EG31CC	B31-14MP	AC31
ECCENTRIC REDUCER	ERD-MB	E32WW	L32	A32W
SHORT TEE	TEE-SB	E7WWW	L7WWW	A7W
TEE	TEE-MB	E7WWW	B7WWW	A7WT
CLAMP TEE	TEE-MF	EG7	B7MP	AC7
REDUCING TEE	RTE-MB	E7RWWW	B7RWWW	A7WR
HEAVY DUTY CLAMP	HDC-DD	13MHM-H	A13MHM	AC13HH
HIGH PRESSURE CLAMP	HPC-DD	13MHP	A13MHP	AC13HP
SOLID END CAP	ECP-DF	EG16A	16AMP	AC16
TUBE HANGER		E24PVC	D24FCF	A24HP

90E-SB 2WCL 90° ELBOW SHORT TANGENT


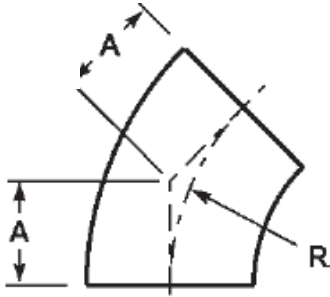
Tube Size OD	A	Radius
1/2	0.750	0.750
3/4	1.125	1.125
1	1.500	1.500
1 1/2	2.252	2.252
2	3.000	3.000
2 1/2	3.752	3.752
3	4.500	4.500
4	6.000	6.000
6	9.000	9.000

90E-MB L2S 90° ELBOW


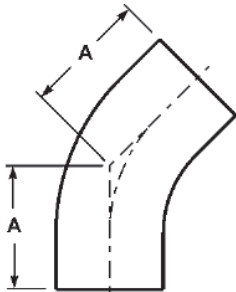
Tube Size OD	A	Radius
1/2	3.000	1.750
3/4	3.000	1.750
1	2.063	1.500
1 1/2	2.937	2.252
2	4.063	3.000
2 1/2	5.189	3.752
3	6.311	4.500
4	8.311	6.000

90E-MF B2CMP 90° CLAMP ELBOW


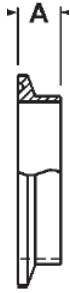
Tube Size OD	A	Radius	Ferrule OD
1/2	1.625	1.125	1.000
3/4	1.625	1.125	1.000
1	2.000	1.500	1.988
1 1/2	2.750	2.252	1.988
2	3.500	3.000	2.520
2 1/2	4.250	3.752	3.051
3	5.000	4.500	3.583
4	6.625	6.000	4.685

45E-SB 2WK1 45° ELBOW SHORT TANGENT


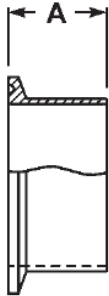
Tube Size OD	A	Radius
1	0.622	1.500
1 1/2	0.937	2.252
2	1.252	3.000
2 1/2	1.563	3.752
3	1.874	4.500
4	2.500	6.000

45E-MB B2KS 45° ELBOW


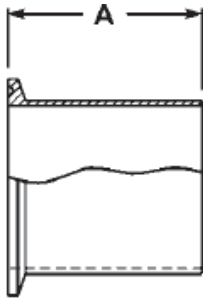
Tube Size OD	A	Radius
1/2	2.250	3.125
3/4	2.250	3.125
1	1.189	1.500
1 1/2	1.626	2.252
2	2.311	3.000
2 1/2	3.000	3.752
3	3.689	4.500
4	4.811	6.000
6	6.500	8.750

FRL-SB 14WMPS SHORT WELDING FERRULE


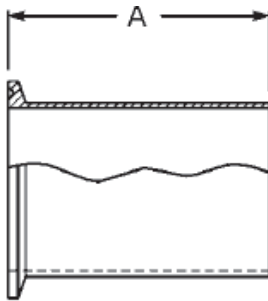
Tube Size OD	A	Ferrule OD
1/2	0.500	1.000
3/4	0.750	1.000
1	0.500	1.988
1 1/2	0.500	1.988
2	0.500	2.520
2 1/2	0.500	3.051
3	0.500	3.583
4	0.622	4.685
6	0.874	6.575
8	0.874	8.571
10	0.874	10.571

FRL-MB L14AM WELDING FERRULE


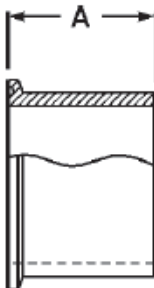
Tube Size OD	A	Ferrule OD
1/2	0.500	1.000
3/4	0.750	1.000
1	1.126	1.988
1 1/2	1.126	1.988
2	1.126	2.520
2 1/2	1.126	3.051
3	1.126	3.583
4	1.126	4.685
6	1.500	6.575
8	1.500	8.571
10	1.500	10.571

FRL-LB BS14AM AUTOMATIC WELD FERRULE


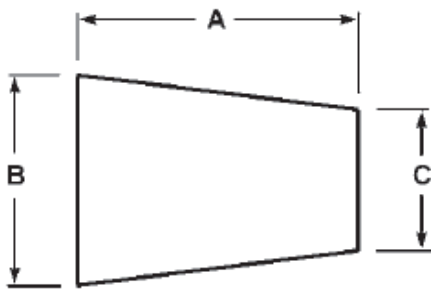
Tube Size OD	A	Ferrule OD
1/2	1.750	1.000
3/4	1.750	1.000
1	1.750	1.988
1 1/2	1.750	1.988
2	2.250	2.520
2 1/2	2.250	3.051
3	2.250	3.583
4	2.250	4.685
6	3.000	6.575

FRL-LLB 14WLMP TANK FERRULE


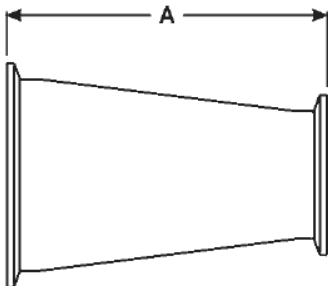
Tube Size OD	A	Ferrule OD
1	3.000	1.988
1 1/2	3.000	1.988
2	3.000	2.520
2 1/2	3.000	3.051
3	4.000	3.583
4	4.000	4.685

HFL-LB 14MPW HEAVY TANK WELDING FERRULE


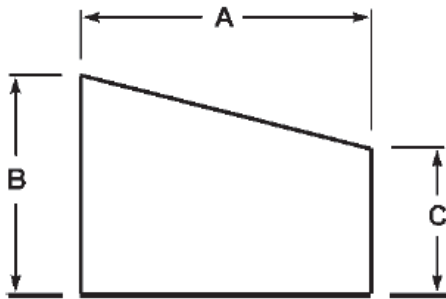
Tube Size OD	A	Ferrule OD
1	1.625	1.988
1 1/2	1.625	1.988
2	1.750	2.520
2 1/2	1.750	3.051
3	1.812	3.583
4	2.125	4.685

CRD-MB L31 CONCENTRIC REDUCER


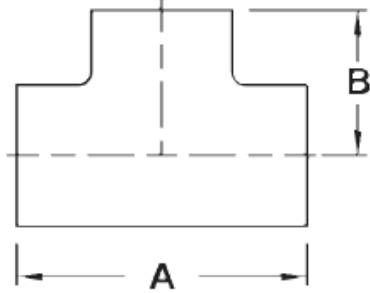
Tube Sizes OD	A	B	C
3/4 X 1/2	1.000	0.750	0.500
1 X 1/2	2.000	1.000	0.500
1 X 3/4	1.000	1.000	0.750
1.5 X 1/2	4.000	1.500	0.500
1.5 X 3/4	3.000	1.500	0.750
1.5 X 1	2.000	1.500	1.000
2 X 1	4.002	2.000	1.000
2 X 1.5	2.000	2.000	1.500
2.5 X 1	6.000	2.500	1.000
2.5 X 1.5	2.000	2.500	1.500
2.5 X 2	2.000	2.500	2.000
3 X 1	8.000	3.000	1.000
3 X 1.5	6.000	3.000	1.500
3 X 2	4.000	3.000	2.000
3 X 2.5	2.000	3.000	2.500
4 X 1	12.000	4.000	1.000
4 X 1.5	10.000	4.000	1.500
4 X 2	8.000	4.000	2.000
4 X 2.5	6.000	4.000	2.500
4 X 3	4.000	4.000	3.000
6 X 4	5.500	6.000	4.000
8 X 6	6.000	8.000	6.000

CRD-MF B31 CLAMP CONCENTRIC REDUCER


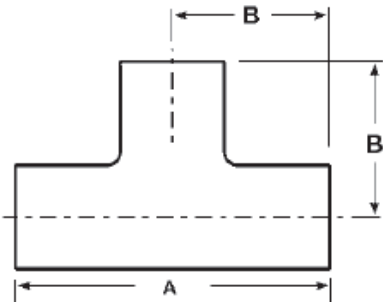
Tube Sizes OD	A	B - Ferrule OD	C - Ferrule OD
1.5 X 1	3.000	1.988	1.988
2 X 1	5.000	2.520	1.988
2 X 1.5	3.000	2.520	1.988
2.5 X 1.5	5.000	3.051	1.988
2.5 X 2	3.000	3.051	2.520
3 X 1.5	7.000	3.583	1.988
3 X 2	5.000	3.583	2.520
3 X 2.5	3.000	3.583	3.051
4 X 2	9.125	4.685	2.520
4 X 3	5.126	4.685	3.051

ERD-MB**L32****ECCENTRIC REDUCER**

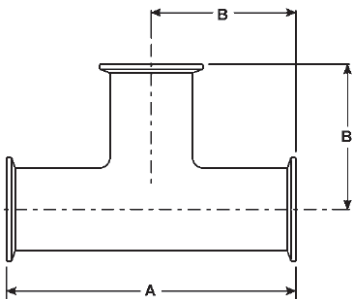
Tube Sizes OD	A	B	C
1 X 1/2	2.000	1.000	0.500
1 X 3/4	1.000	1.000	0.750
1.5 X 1	2.000	1.500	1.000
2 X 1	4.000	2.000	1.000
2 X 1.5	2.000	2.000	1.500
2.5 X 1	6.000	2.500	1.000
2.5 X 1.5	4.000	2.500	1.500
2.5 X 2	2.000	2.500	2.000
3 X 1	8.000	3.000	1.000
3 X 1.5	6.000	3.000	1.500
3 X 2	4.000	3.000	2.000
3 X 2.5	2.000	3.000	2.500
4 X 1	12.000	4.000	1.000
4 X 1.5	10.000	4.000	1.500
4 X 2	8.000	4.000	2.000
4 X 2.5	6.000	4.000	2.500
4 X 3	4.000	4.000	3.000
8 X 6	6.000	8.000	6.000

TEE-SB L7WWW SHORT TEE


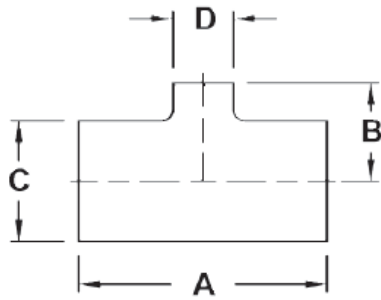
Tube Size OD	A	B	Nominal Wall
3/4	2.252	1.126	0.065
1	2.252	1.126	0.065
1 1/2	3.311	1.656	0.065
2	4.122	2.061	0.065
2 1/2	4.689	2.344	0.065
3	5.189	2.594	0.065
4	6.878	3.439	0.083

TEE-MB B7WWW TEE


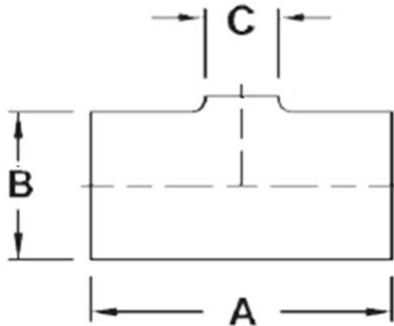
Tube Size OD	A	B	Nominal Wall
1/2	3.750	1.875	0.065
3/4	4.000	2.000	0.065
1	3.748	1.874	0.065
1 1/2	4.504	2.252	0.065
2	6.000	3.000	0.065
2 1/2	6.000	3.000	0.065
3	6.504	3.252	0.065
4	7.748	3.874	0.083
6	10.000	5.000	0.083

TEE-MF B7MP CLAMP TEE


Tube Size OD	A	B	Ferrule OD	Nominal Wall
1	4.748	2.374	1.988	0.065
1 1/2	5.504	2.752	1.988	0.065
2	7.000	3.500	2.520	0.065
2 1/2	7.000	3.500	3.051	0.065
3	7.504	3.752	3.583	0.065
4	9.000	4.500	4.685	0.083

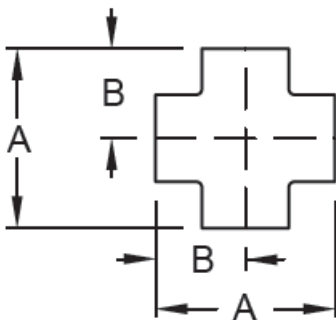
RTE-MB B7RWWW REDUCING TEE


Tube Sizes OD	A	B	C	D	Nom. Wall
1 X 3/4	4.250	2.125	1.0	0.75	0.065
1.5 X 1/2	7.750	2.375	1.5	0.50	0.065
1.5 x 3/4	4.750	2.375	1.5	0.75	0.065
1.5 X 1	3.312	1.375	1.5	1.0	0.065
2 X 1	4.125	1.906	2.0	1.0	0.065
2 X 1.5	4.125	1.906	2.0	1.5	0.065
2.5 X 1	4.687	3.125	2.5	1.0	0.065
2.5 X 1.5	4.687	2.125	2.5	1.5	0.065
2.5 X 2	4.687	2.312	2.5	2.0	0.065
3 X 1	5.187	2.906	3.0	1.0	0.065
3 X 1.5	5.187	2.906	3.0	1.5	0.065
3 X 2	5.187	2.562	3.0	2.0	0.065
3 X 2.5	5.187	2.562	3.0	2.5	0.065
4 X 1.5	6.875	4.906	4.0	1.5	.083x.065
4 X 2	6.875	5.062	4.0	2.0	.083x.065
4 X 2.5	6.875	5.093	4.0	2.5	.083x.065
4 X 3	6.875	5.093	4.0	3.0	.083x.065
6 X 2	11.250	5.625	6.0	4.0	.109x.065
6 X 3	11.250	5.625	6.0	4.0	.109x.083
6 X 4	11.250	5.625	6.0	4.0	.109x.083

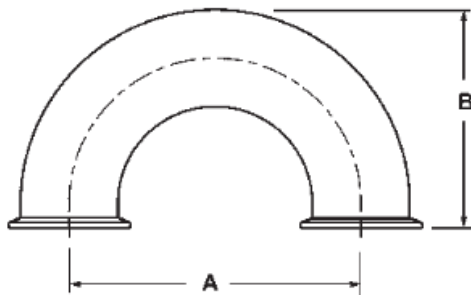
PTE-DB**Pulled TEE**

Tube Sizes OD	A	B	C	Nom. Wall
2 X 1.5	6.000	2.0	1.5	0.065
2 X 2	6.000	2.0	2.0	0.065
2.5 X 1.5	6.000	2.5	1.5	0.065
2.5 X 2	6.000	2.5	2.0	0.065
2.5 X 2.5	6.000	2.5	2.5	0.065
3 X 1.5	6.000	3.0	1.5	0.065
3 X 2	6.000	3.0	2.0	0.065
3 X 2.5	6.000	3.0	2.5	0.065
3 X 3	6.000	3.0	3.0	0.065
4 X 1.5	6.000	4.0	1.5	.083x.065
4 X 2	6.000	4.0	2.0	.083x.065
4 X 2.5	6.000	4.0	2.5	.083x.065
4 X 3	6.000	4.0	3.0	.083x.065
4 X 4	6.000	4.0	4.0	.083x.065
6 X 2	6.000	6.0	4.0	.109x.065
6 X 3	6.000	6.0	4.0	.109x.083
6 X 4	6.000	6.0	4.0	.109x.083

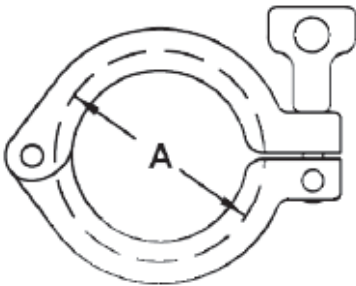
- **Call for Pricing on Custom Pulled Tees and Custom Header Assemblies**

CRS-MB**B9WWWW Cross**

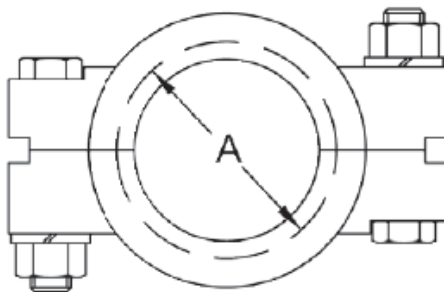
Tube Size OD	A	B	Nominal Wall
1	2.252	1.126	0.065
1 1/2	3.311	1.656	0.065
2	4.122	2.061	0.065
2 1/2	4.689	2.344	0.065
3	5.189	2.594	0.065
4	6.878	3.439	0.083

UBN-MF
U - Bend


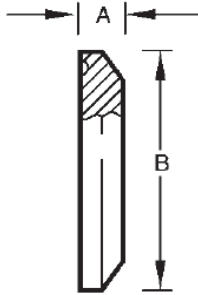
Tube Size OD	A	B	Ferrule OD	Nominal Wall
1	3.000	2.500	1.988	0.065
1 1/2	4.500	3.500	1.988	0.065
2	6.000	4.500	2.520	0.065
2 1/2	7.500	5.500	3.051	0.065
3	9.000	6.500	3.583	0.065
4	12.000	8.625	4.685	0.083

HDC-DD
13MHHS
HEAVY DUTY CLAMP


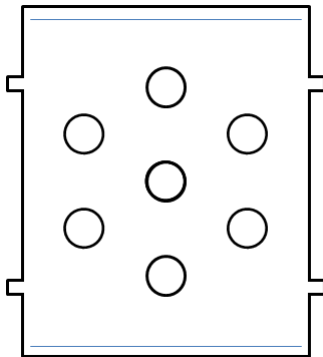
Tube Size OD	A
3/4	1.102
1 & 1 1/2	1.102
2	2.122
2 1/2	2.122
3	2.654
4	3.185
6	3.717
8	4.819
10	6.709

HPC-DD
13MHP
HIGH PRESSURE CLAMP


Tube Size OD	A
1	2.047
1 1/2	2.047
2	2.579
2 1/2	3.110
3	3.642
4	4.744

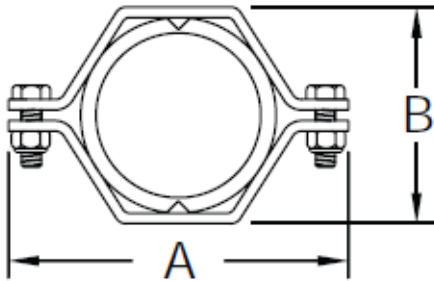
ECP-DF 16AMP SOLID END CAP


Tube Size OD	A	B
1/2 & 3/4	0.248	1.000
1 & 1 1/2	0.248	1.988
2	0.248	2.520
2 1/2	0.248	3.051
3	0.248	3.583
4	0.311	4.685
6	0.437	6.575
8	0.437	8.571
10	0.437	10.571

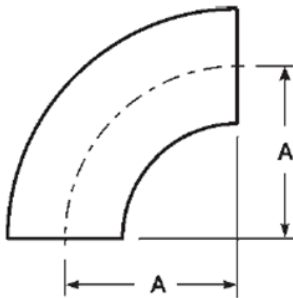
FLP
Custom Flow Plate


Size	304
Custom	Call for prices

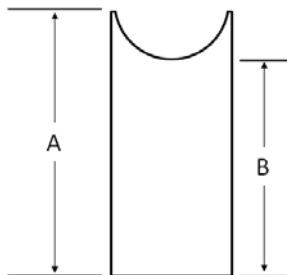
- We produce Custom Flow Plates to your specifications.
- Call for Pricing

HGR-DD D24FCF TUBE HANGER


Tube Size OD	A	B
1	3.425	1.450
1 1/2	4.000	2.125
2	4.500	2.500
2 1/2	4.950	3.125
3	5.500	3.750
4	6.950	4.750

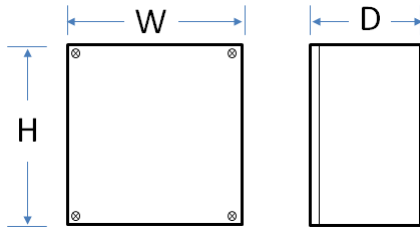
S90-40
Schedule 40 - 90° ELBOW


Pipe Size OD	A
1 1/2	2.250
2	3.000

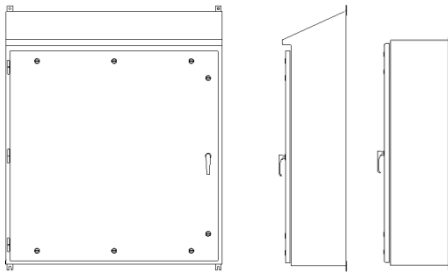
SAD-FL
Schedule 40 - Saddle


Pipe Size OD	A	B
1 1/2	3.000	2.750
2	3.000	2.750

- Saddles can be made to custom lengths.

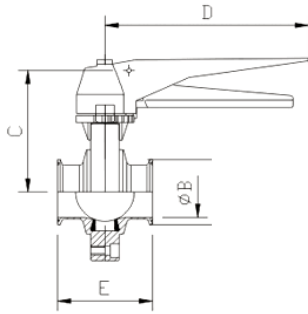
JBX**Junction Box**

Height	Width	Depth
6	6	4
8	8	5
8	8	6
10	10	6
10	10	8
12	12	8

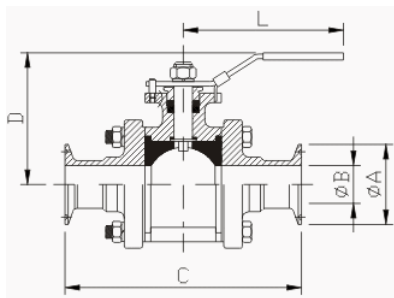
ECL**12 Ga. UL Compliant Electrical Enclosures**

Height	Width	Depth
30	48	12
48	30	12
48	48	12
56	42	12
56	48	12

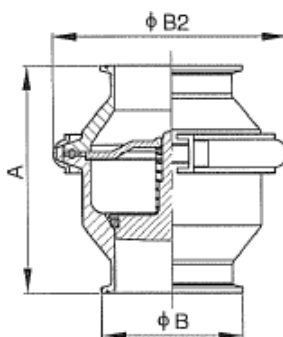
- **Prices do not include sub-panels.**
- **An aluminum sub-panel can be added for \$250.00**
- **Enclosures come with either a sloped or flat top.**
- **We can also make custom enclosures to your specifications.**

BFV-MF BUTTERFLY VALVE


Tube Size OD	E	C	D	B
1	2.520	3.228	5.906	1.984
1 1/2	2.835	3.425	5.906	1.984
2	2.835	3.681	5.906	2.516
2 1/2	2.835	3.681	5.906	3.051
3	2.992	4.016	5.906	3.579
4	4.094	4.705	5.906	4.681

BLV-DF BALL VALVE


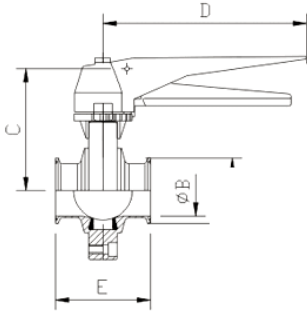
Tube Size OD	C	D	L	A
1/2	3.488	2.051	3.937	1.000
3/4	4.043	2.280	5.197	1.000
1	4.535	2.441	5.197	1.984
1 1/2	5.508	3.858	6.890	1.984
2	6.224	4.091	6.890	2.516
2 1/2	7.803	5.551	10.236	3.051
3	8.957	6.098	10.236	3.579
4	9.528	6.890	10.236	4.681

CKV-DF CHECK VALVE


Tube Size OD	A	B2	B
1	4.016	3.425	1.988
1 1/2	4.016	3.425	1.988
2	4.465	3.937	2.520
2 1/2	4.803	4.528	3.051
3	5.591	5.039	3.583
4	7.165	6.457	4.685

BUTTERFLY VALVE TECHNICAL DATA

BFV-MF BUTTERFLY VALVE



Tube Size OD	E	C	D	B
1	2.520	3.228	5.906	1.984
1 1/2	2.835	3.425	5.906	1.984
2	2.835	3.681	5.906	2.516
2 1/2	2.835	3.681	5.906	3.051
3	2.992	4.016	5.906	3.579
4	4.094	4.705	5.906	4.681

Pressure Rating and Operating Torque

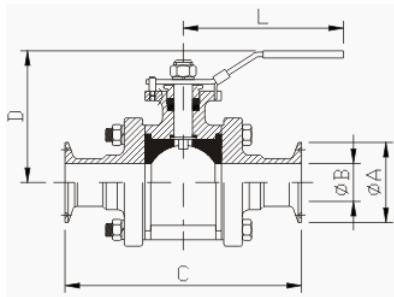
Tube Size OD	Pressure Rating at 20 C (lb/in ²)	Minimum Operating Torque (in-lbs)
1	136.512	43.424
1 1/2	136.512	60.793
2	136.512	95.532
2 1/2	106.650	191.06
3	106.650	225.80
4	82.476	338.70

Air Requirements for Valve Actuators

Tube Size OD	Air Pressure (lb/in ²)	Air Consumption at 6.2 Kg/cm ² 88.164
1	56.88 – 85.32	1.3
1 1/2	56.88 – 85.32	1.3
2	56.88 – 85.32	1.3
2 1/2	56.88 – 85.32	1.3
3	56.88 – 85.32	1.3
4	56.88 – 85.32	2.7

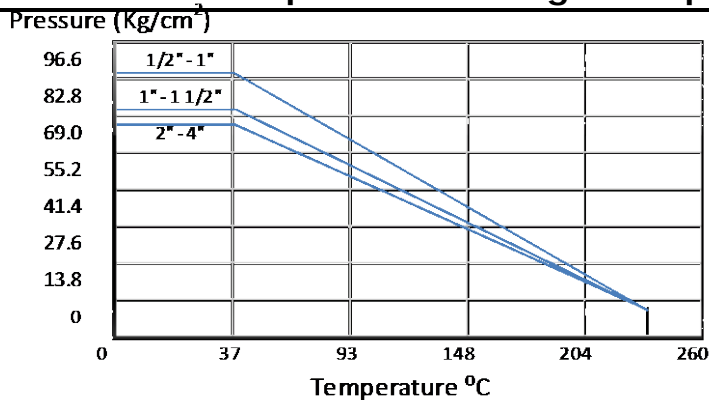
BALL VALVE TECHNICAL DATA

BLV-DF BALL VALVE



Tube Size OD	C	D	L	A
1/2	3.488	2.051	3.937	1.000
3/4	4.043	2.280	5.197	1.000
1	4.535	2.441	5.197	1.984
1 1/2	5.508	3.858	6.890	1.984
2	6.224	4.091	6.890	2.516
2 1/2	7.803	5.551	10.236	3.051
3	8.957	6.098	10.236	3.579
4	9.528	6.890	10.236	4.681

Pressure vs Temperature Rating and Operating Torque



Size Tube OD	Minimum Operating Torque (in-lbs)
1/2	78.163
3/4	95.532
1	121.59
1 1/2	234.49
2	269.23
2 1/2	434.24
3	633.99
4	929.27

Air Requirements for Valve Actuators

Tube Size OD	Air Pressure (Kg/cm ²)	Air Consumption at 5.5Kg/cm ² Spring Return	Air Consumption at 5.5Kg/cm ² Double Acting
1/2	4 – 6	3.4	3.4
3/4	4 – 6	6.9	3.4
1	4 – 6	6.9	3.4
1 1/2	4 – 6	6.9	6.9
2	4 – 6	15.1	6.9
2 1/2	4 – 6	24.8	15.1
3	4 – 6	24.8	24.8
4	4 – 6	41.4	24.8